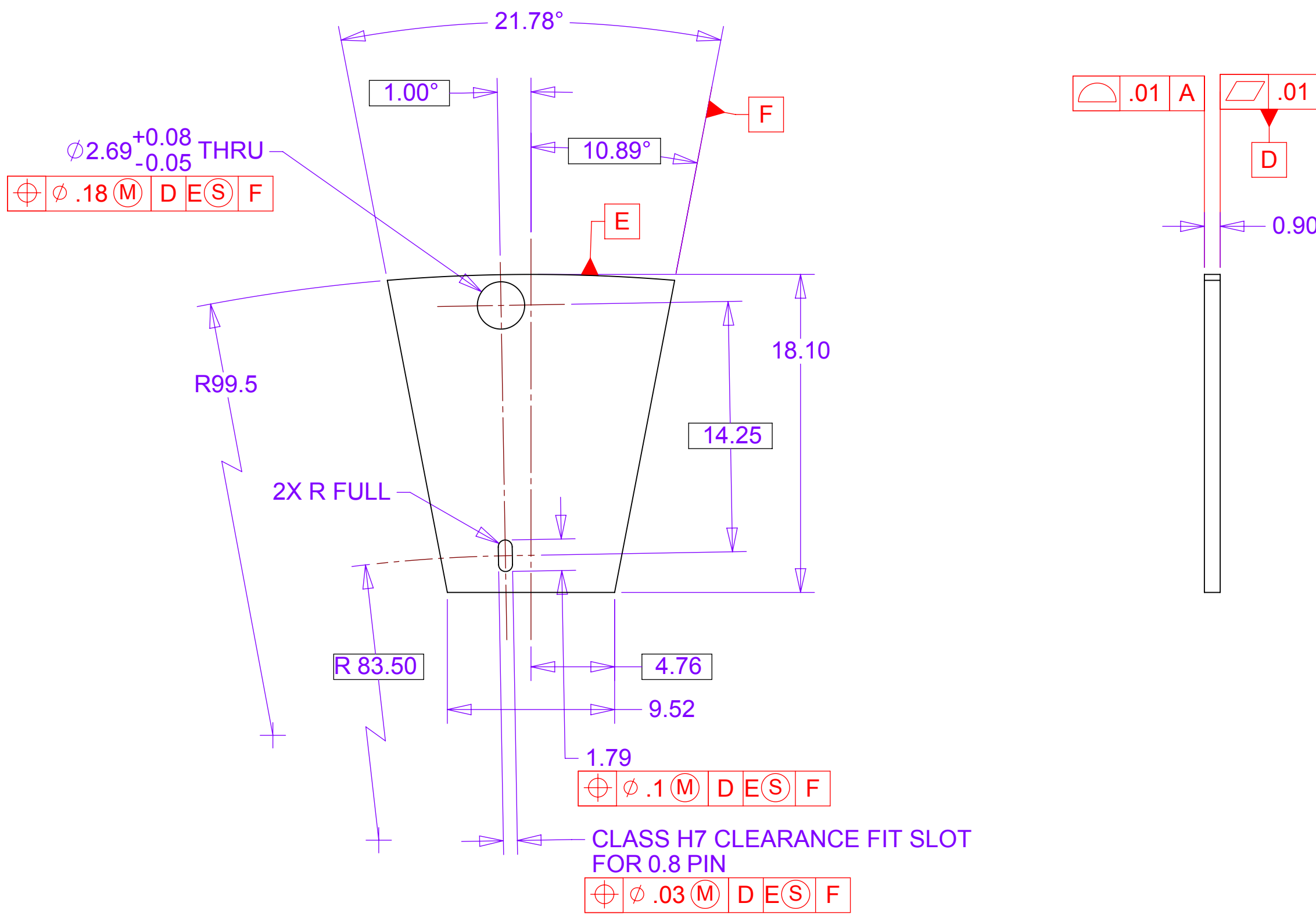
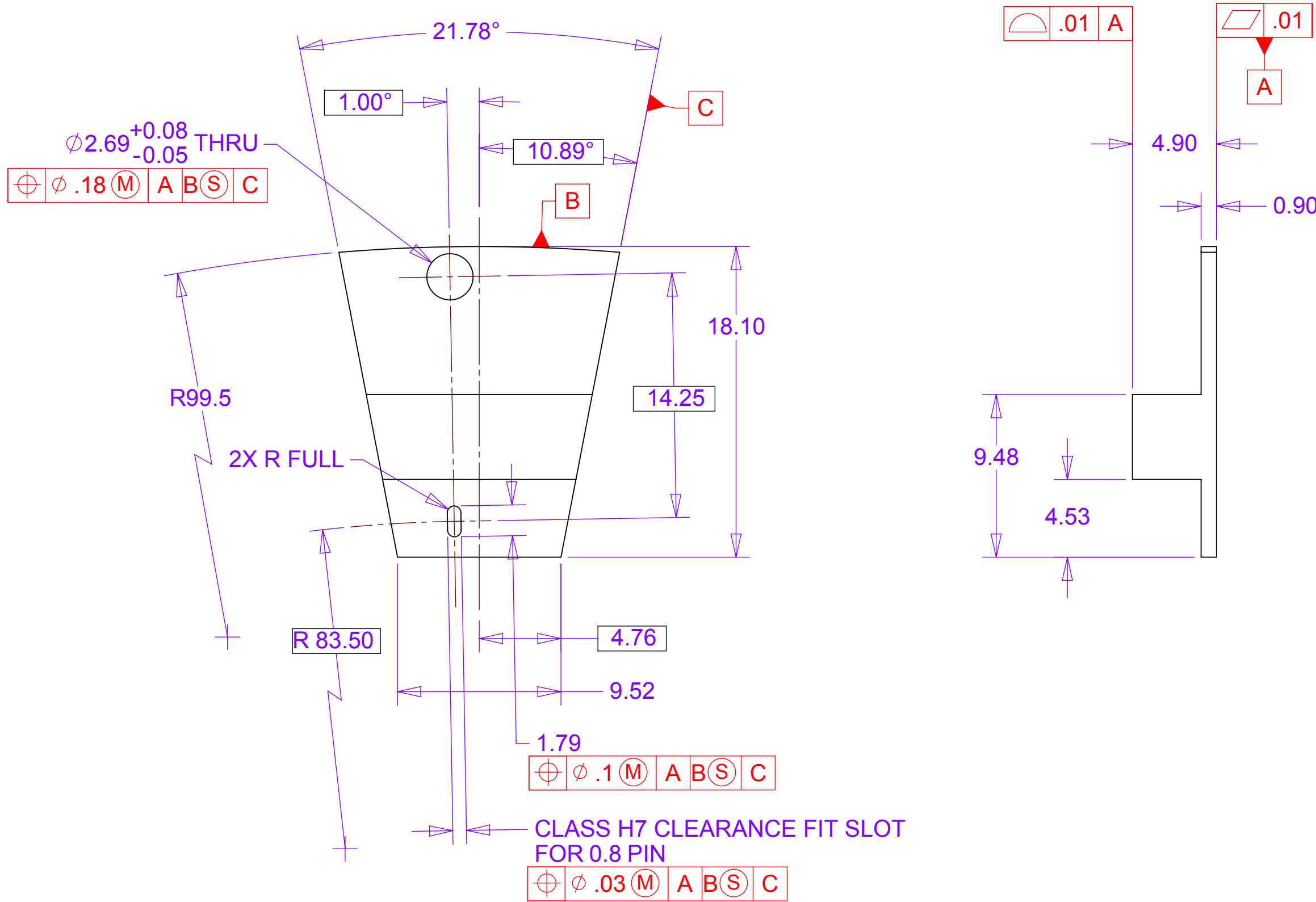
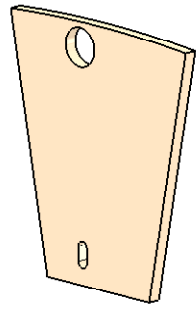
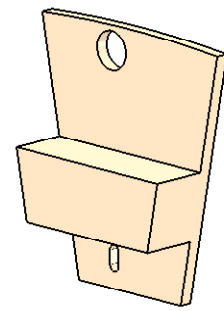


REV	REVISIONS	DATE	APPROVED
	DESCRIPTION		
A	REVISED & REDRAWN	11/12/09	RJ Ponchione



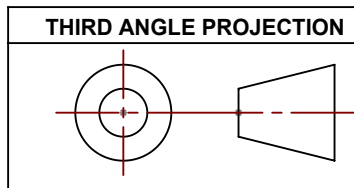
-1 STATION 1 OUTER RADIUS THERMAL MOUNT -HIGH
MATERIAL: POCO GRAPHITE AXM5Q

-3 STATION 1 OUTER RADIUS THERMAL MOUNT -LOW
MATERIAL: POCO GRAPHITE AXM5Q

NOTES: UNLESS OTHER WISE SPECIFIED

1. ALL DIMENSIONS IN MILLIMETERS
2. DIMENSIONS AND TOLERANCING PER ASME Y14.5M-1994
3. SURFACE TEXTURE PER ANSI/ASME B 46.1-1985
4. REMOVE ALL BURRS AND BREAK SHARP EDGES TO A MAXIMUM OF .4
5. ALL INSIDE CORNERS TO BE .4 RADIUS MAX
6. COUNTERSINK 82 DEGREES ALL TAPPED HOLES TO MAJOR DIAMETER
7. COUNTERSINK 82 DEGREES APPROXIMATELY .08/1.5 DEEP ALL DRILLED HOLES
8. PARTS TO BE THOROUGHLY CLEANED TO REMOVE ALL OIL, GREASE, DIRT AND CHIPS
9. PART NUMBER (DRAWING NO., DASH NO., REVISION NO., SERIAL NO.) TO BE CLEARLY MARKED ON THE PACKAGING BAG OR PART ITSELF.

THIS DOCUMENT CONTAINS INFORMATION THAT IS THE PROPRIETARY PROPERTY OF HYTEC, INC.
REPRODUCTION, DISCLOSURE, OR RELEASE TO OTHERS, MANUALLY OR ELECTRONICALLY,
IS STRICTLY PROHIBITED WITHOUT THE PRIOR WRITTEN CONSENT OF HYTEC, INC.



UNLESS OTHERWISE SPECIFIED: DIMENSIONS ARE IN MILLIMETERS -TOLERANCES-		CAD GENERATED DRAWING, DO NOT MANUALLY UPDATE DO NOT SCALE DRAWING		<div>HYTEC, INC</div> <div>TITLE</div> <div>PHENIX CENTRAL UPGRADE FVTX STATION 1 OUTER RADIUS THERMAL MOUNT</div>			
DECIMALS X = +/- .5 .X = +/- .1 .XX = +/- .01 .XXX = +/- .001	ANGULAR .X = +/- 30° .XX = +/- 15° SURFACE FINISH = 250						
FINISH			SIGNATURE	DATE	DWG. NO.	SIZE	SHEET NO.
		Designer	Roger L. Smith	3/4/2009			
		Drawn	Roger L. Smith	3/4/2009			
PART NO.		Checked	RJ Ponchione	10/20/2009			
111-PHX-02-3602-1,3		Engineer	RJ Ponchione	3/4/2009			
		Approved	RJ Ponchione	10/20/2009	SCALE 4:1	REVISION	A